

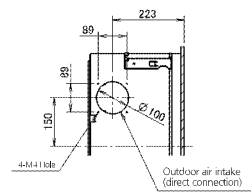
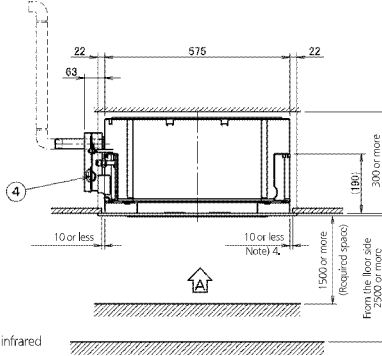
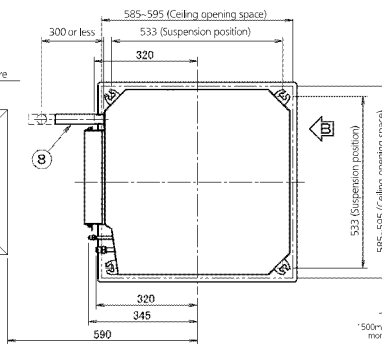
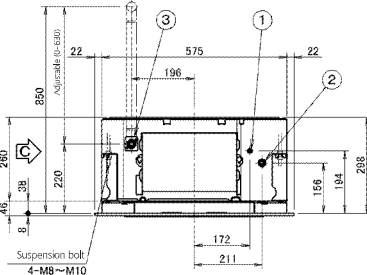
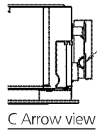
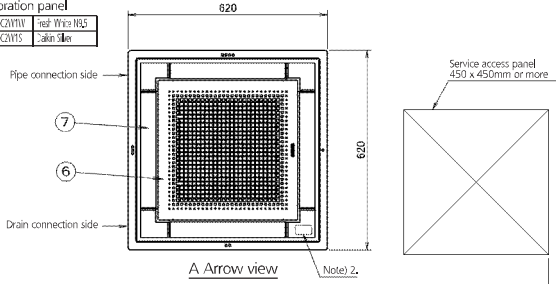
5 Dimensional drawings

5 - 1 Dimensional Drawings

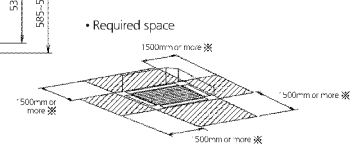
FFQ25-35C

• Decoration panel

BY96CWMV Heat Wire NSS
BY96CWMV Skin Silver



• Required space



※ When the discharge grill is closed, the required space is 200mm or more.

1	Drain pipe connection	φ 64 Pipe connection
2	Gas line connection	φ 1/2" Pipe connection
3	Drain pipe connection	φ 70 (G.L. φ 76)
4	Power supply connection	
5	Remote control code and controlling connection	
6	Air discharge grill	
7	Switch panel	
8	Drain hose (accessory)	1/4" φ 25 (1/4" φ 25)

Note:

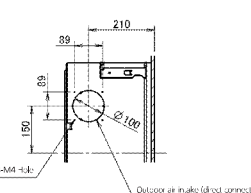
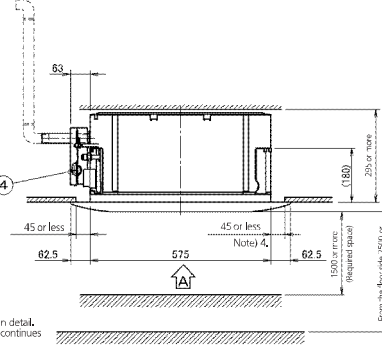
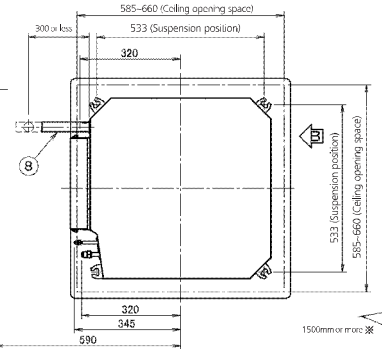
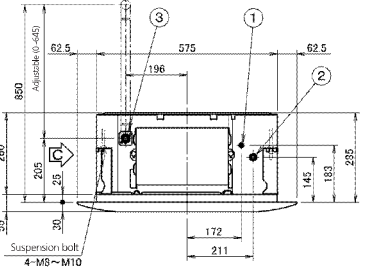
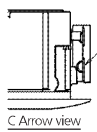
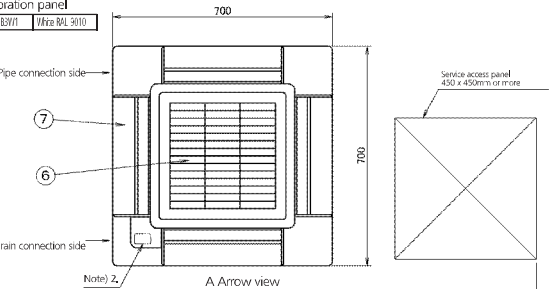
1. Sticking location for manufacturer's label
Manufacturer's label for indoor unit: on the bell mouth inside suction grille.
Manufacturer's label for decoration panel: on the inner frame inside suction grille.
2. In case of using infrared remote controller, this position will be a signal receiver. Refer to the drawing of infrared remote controller in detail.
3. When the temperature and humidity in the ceiling exceed 30°C and RH 80% or the fresh air is induced into the ceiling or the unit continues 24 hour operation, an additional insulation (thickness 10mm or more glasswool or polyethylene foam) is required.
4. Though the installation is acceptable up to maximum of 595mm square ceiling opening. Keep the clearance of 10mm or less between the main unit and the ceiling opening so that the panel overlap allowance can be ensured.

3D082433

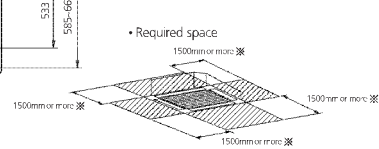
FFQ25-35C

• Decoration panel

BY96CWMV White ML 3010



• Required space



※ When the discharge grill is closed, the required space is 200mm or more.

1	Drain pipe connection	φ 64 Pipe connection
2	Gas line connection	φ 1/2" Pipe connection
3	Drain pipe connection	φ 70 (G.L. φ 76)
4	Power supply connection	
5	Remote control code and controlling connection	
6	Air discharge grill	
7	Switch panel	
8	Drain hose (accessory)	1/4" φ 25 (1/4" φ 25)

Note:

1. Sticking location for manufacturer's label
Manufacturer's label for indoor unit: on the bell mouth inside suction grille.
Manufacturer's label for decoration panel: on the inner frame inside suction grille.
2. In case of using infrared remote controller, this position will be a signal receiver. Refer to the drawing of infrared remote controller in detail.
3. When the temperature and humidity in the ceiling exceed 30°C and RH 80% or the fresh air is induced into the ceiling or the unit continues 24 hour operation, an additional insulation (thickness 10mm or more glasswool or polyethylene foam) is required.
4. Though the installation is acceptable up to maximum of 660mm square ceiling opening. Keep the clearance of 45mm or less between the main unit and the ceiling opening so that the panel overlap allowance can be ensured.

3D082434A